

Sewing the Fly-Front on Jalie Stretch Jeans

Step-by-Step with Photos

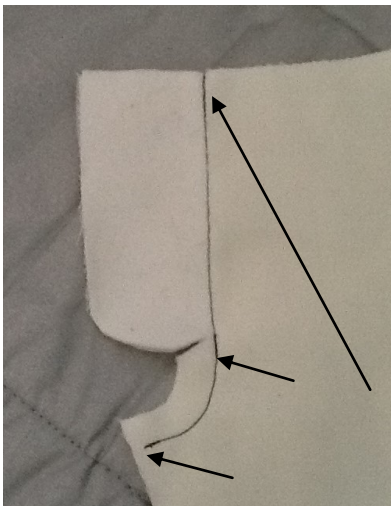
For www.sewwhatyvette.com, by Yvette Matthys, Chilcott, laFosse



I cut the fly shield about 3/4 inch longer than the pattern., and transferred all the pattern marks to the fabric.



A lightweight fusible interfacing has been fused to the wrong side of both fronts.



With right sides together, and using a 1 cm (or 3/8") seam allowance, the front crotch seam has been sewn from the inseam to the dot, back stitched at both ends. Then a long stitch was used to baste the remainder of the seam. (follow the edge of the interfacing) Backstitch at the top. Clip to the dot and press the fly seam open and the seam allowance below the dot toward the right front.



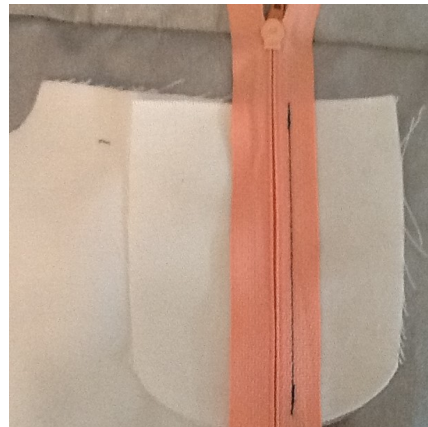
From the right side, topstitch 1/8 inch to the right of the center seam, all the way to the crotch through the seam allowance.



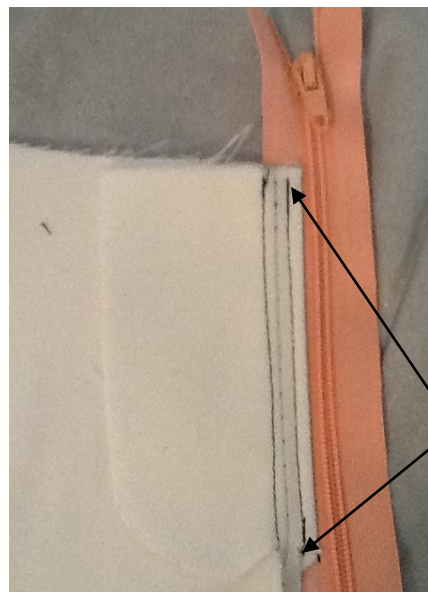
With the inside of the jeans facing up, and the fly facing pressed open, flip the jeans toward the left so you are only working on the right fly extension.

Stick a strip of Wonder tape 3/8" to the right of the basted center front seam. Peel

off the paper and stick the right side of the zipper down to it so that the teeth of the zipper lie just to the right of the center front seam. It's ok if the top of the zipper extends beyond the top edge. If your zipper has a stopper at the bottom, watch that it is at least level or below the fly extensions.

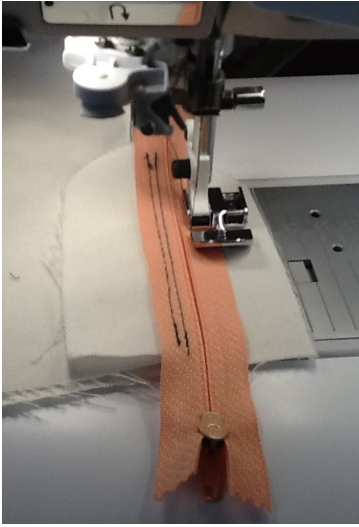


Sew through the zipper tape and the right fly extension, sewing as close to the zipper teeth as possible.

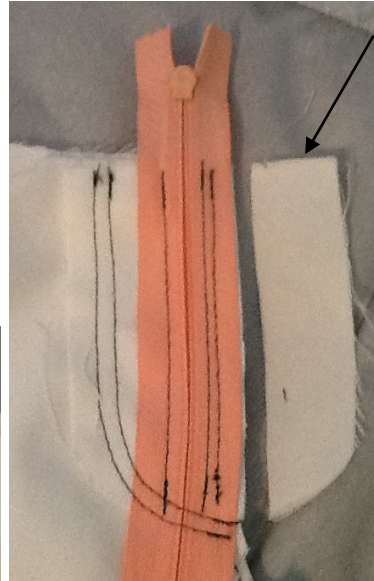


Flip the zipper over so the right side is up and the facing is tucked under to the left.

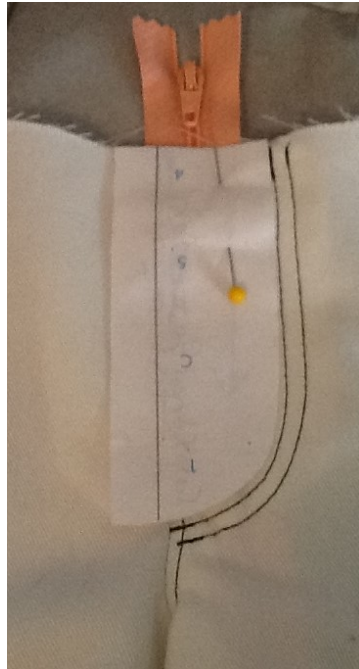
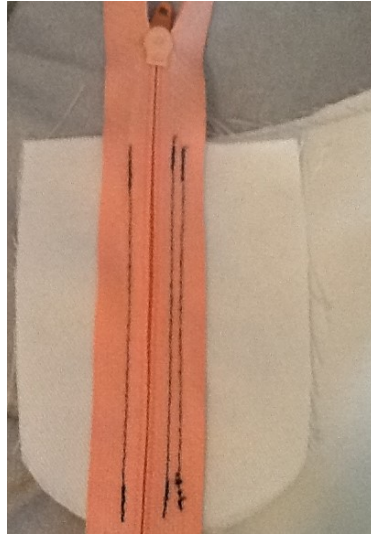
Top stitch close to the fold of the fabric.



Flip the zipper so it is face down over the left front extension, and pin, making sure everything is smooth. Sew close to the zipper teeth, through only the zipper and the left front extension.



Cut off the excess right fly extension even with the edge of the zipper tape.



Turn the front over so the right side is up. On the pattern piece for the interfacing, draw a line parallel to the edge that curves at the bottom, 1 1/8" from it. Pin the paper to the front so the line is over the basted center front.



Fold the fly shield with wrong sides together, and zig-zag around the 3 raw edges.

Pin the long zig zagged edge even with the right edge of the zipper tape and sew through just the shield, zipper tape and fly extension. I did this with the shield down against the teeth of the sewing machine so I could see the edge of the zipper tape.



Use the curved edge of the paper as a top-stitching guide.

Remove the paper and carefully take out the basting at the center front.



With the shield pinned into place, bar tack from the front on the top-stitching as shown.

The excess zipper and fly shield can be cut off when you attach the waistband.