

A Quick and Easy Sun-Visor

Designed and written by Yvette Chilcott,
www.sewwhatyvette.com

Supplies:

- 2 pieces of fabric for the brim, cotton is best, 12" x 8" (30cm x 20cm)
- 2 pieces of heavy fusible interfacing for the brim (craft-fuse) 12" x 8" (30cm x 20cm)
- 1 piece of fabric for the band, again cotton is best, 4" x 24" (10cm x 61cm)
- 1 piece of heavy fusible interfacing for the band, 1 ½" x 23 ½" (3.8cm x 59.5cm)
- both halves of hook and loop tape, (Velcro) the sew-in type, 2 inches x 1 inch wide.

Trace the pattern, cut 2 of fabric on the fold. Also cut 2 of heavy-weight fusible interfacing on the fold.

Fuse the interfacing to the wrong sides of the 2 brim pieces.

With right sides together, sew the outer edge with ¼" seam allowance. Trim, using pinking shears if you have them.



Turn right sides out and press. Decide which side is going to be the outside, then top-stitch a few lines following the outer edge. Also sew both layers together along the inner edge at ¼".



Press the band with wrong sides together longways to mark the middle.

Open it out and then fuse the piece of band



interfacing to the wrong side, having one long edge even with that crease mark you just made, and about ¼ inch in from each end.

Fold each short end in by ¼" and press, then the edge along the interfacing as well.

Mark the center of the un-interfaced long edge of the band, as well as the center of the inner curve of the brim.

Pin the **right** side of the un-interfaced edge of the band to the **wrong** side of the brim, matching up the center marks.

Pin the band to the remainder of the brim. If you need to clip into the edge of the brim to make it easier to shape it to the band do so, just a bit and no deeper than a scant $\frac{1}{4}$ inch. Sew using a $\frac{1}{4}$ " seam allowance following the previous stitching. I sewed with the brim on top.

Press in $\frac{1}{4}$ inch at the remaining sides of the band as shown. Fold the band with wrong



sides together along the original crease line, tucking in the pressed seam allowances. The folded and pressed edge along the interfacing will meet the sewing line where you attached the brim to the band originally to enclose the edge of the brim.



Starting at one short end, with the interfaced side on top, top-stitch about $\frac{1}{8}$ " in from the



edge, pivoting at the corner, and proceeding on the long edge. Continue to the end.



Sew the soft side of the Velcro to the inside of one end, and the hook side to the outside of the other end.



Scrappy Version

Supplies:

- 2 pieces of heavy fusible interfacing for the brim (craft-fuse) 12" x 8" (30cm x 20cm)
- 1 piece of heavy fusible interfacing for the band, 1 ½" x 23 ½" (3.8cm x 59.5cm)
- both halves of hook and loop tape, (Velcro) the sew-in type, 2 inches x 1 inch wide
- Fabric Scraps. I used ends of jelly rolls (2 ½-inch wide strips) that co-ordinated with each other. For the band I used 12 pieces 2 ½" x 4". For both the upper and under brims, I used 1 main fabric, (the tie-dyed) 24 2 ½" squares, plus 12 turquoise 2 ½" squares and 12 fuchsia 2 ½" squares.

Piece the Scrap Band:

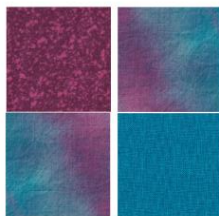
Using ¼-inch seam allowance, sew the 12 band pieces together at the 4-inch sides. Press the seam allowances to one side, or open. Your band piece is 4" x 24 ½".

Piece the Scrappy Brims:

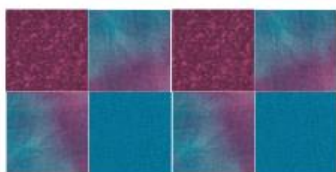
Using ¼-inch seam allowance piece the squares to create 2 rectangles 4 squares by 6 squares.

For My Organized Scrappy Brim:

Using ¼-inch seam allowance sew the 12 turquoise squares AND the fuchsia squares each to a tie-dye square. Press the seam allowances toward the tie-dye squares.

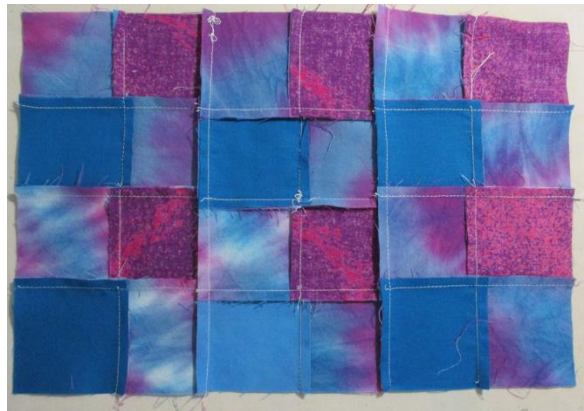


Select a fuchsia and a turquoise set and join them as shown, matching the center seam, making twelve 4-patches. Press all the seam allowances in the same direction.



Join the 4-patches to make six 8-patches as shown. I pressed 4 of the seam allowances in

1 direction, the other 2 in the opposite direction, then made two 24-patches.



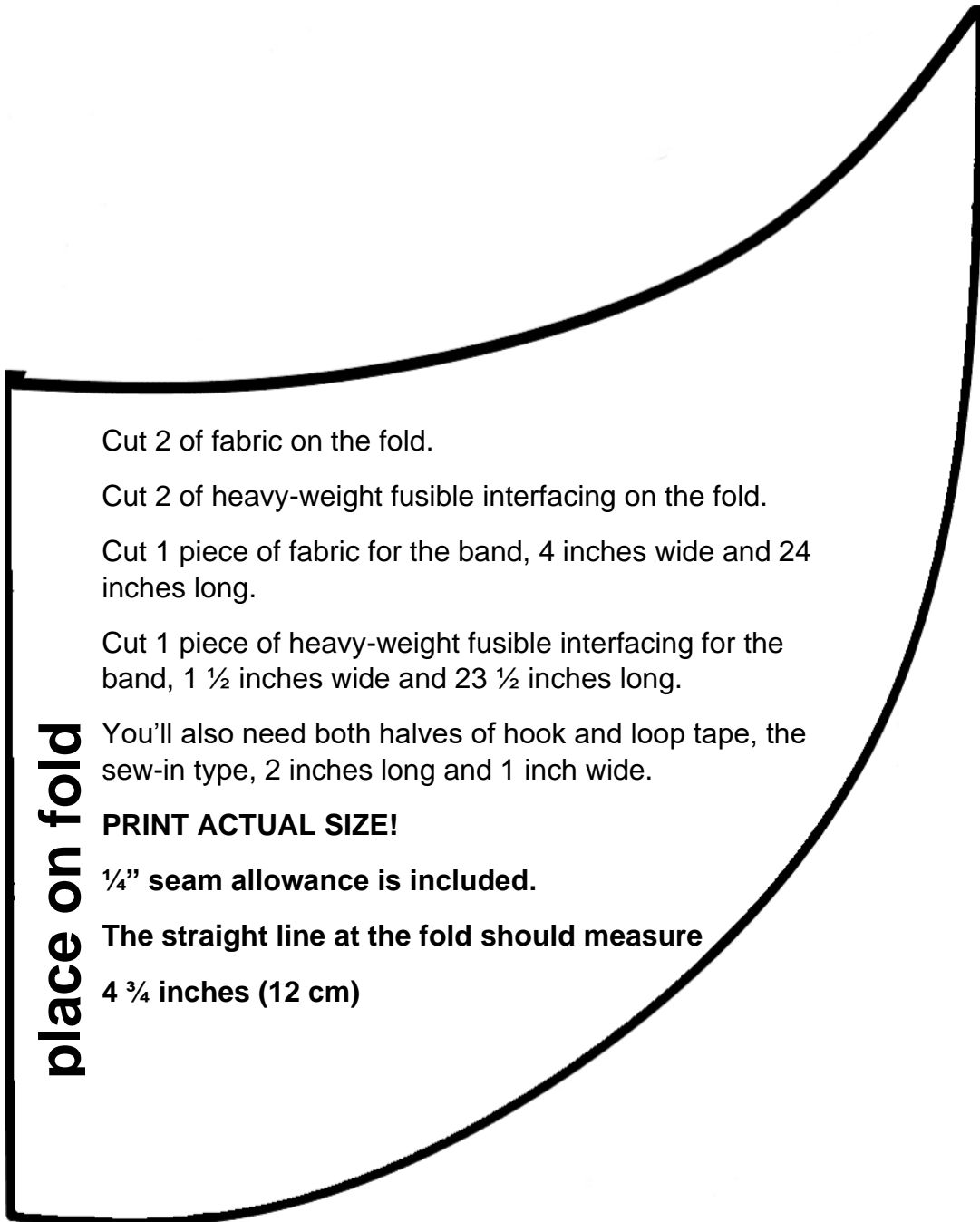
To cut the brims, trace the pattern onto a folded piece of paper, then unfold it. The fold line goes along the center seam. Cut the other brim the same way, but a little higher on the fabric so the seams aren't too bulky at the sides.



Fuse the interfacing to the wrong sides of each and proceed with the original instructions.

I just happened to have the perfect-coloured Sulky rayon for the top-stitching!

I'm looking forward to seeing your creations, please share on facebook, or send them to me at yvettechilcott@yahoo.ca



Cut 2 of fabric on the fold.

Cut 2 of heavy-weight fusible interfacing on the fold.

Cut 1 piece of fabric for the band, 4 inches wide and 24 inches long.

Cut 1 piece of heavy-weight fusible interfacing for the band, 1 ½ inches wide and 23 ½ inches long.

place on fold You'll also need both halves of hook and loop tape, the sew-in type, 2 inches long and 1 inch wide.

PRINT ACTUAL SIZE!

¼" seam allowance is included.

The straight line at the fold should measure

4 ¾ inches (12 cm)